

LAND FOR SALE



BRAY REALTY ADVISORS

3307 S US 1, Ft Pierce, FL 34982

DESCRIPTION

Prime 3.72 Acres of General Commercial land on South US 1, Ft. Pierce. Former Used Car lot with 150 Ft of US 1 frontage and over 1,000 Ft of Depth. Annexed to the City of Ft. Pierce and in process for site plan approval of a 25,000 SF warehouse on the front 2.65 acres.

Owner has done extensive due diligence; reports will be available upon execution of NDA.

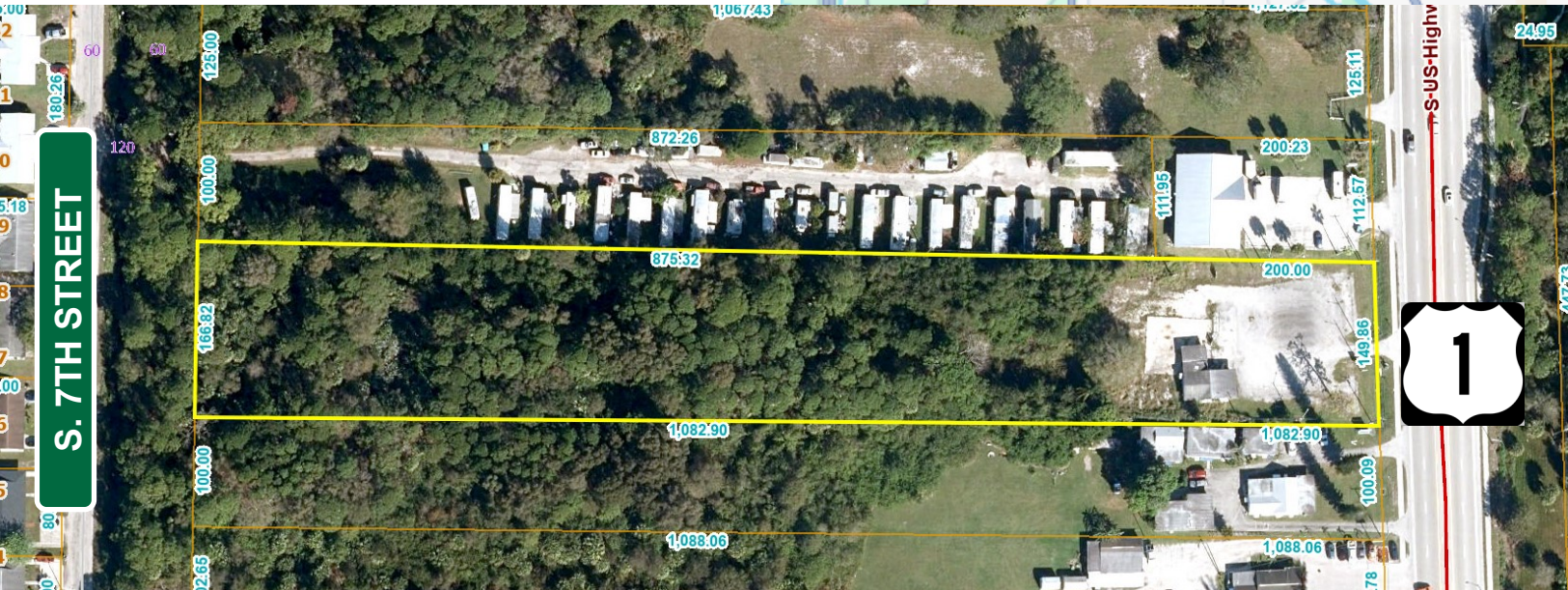
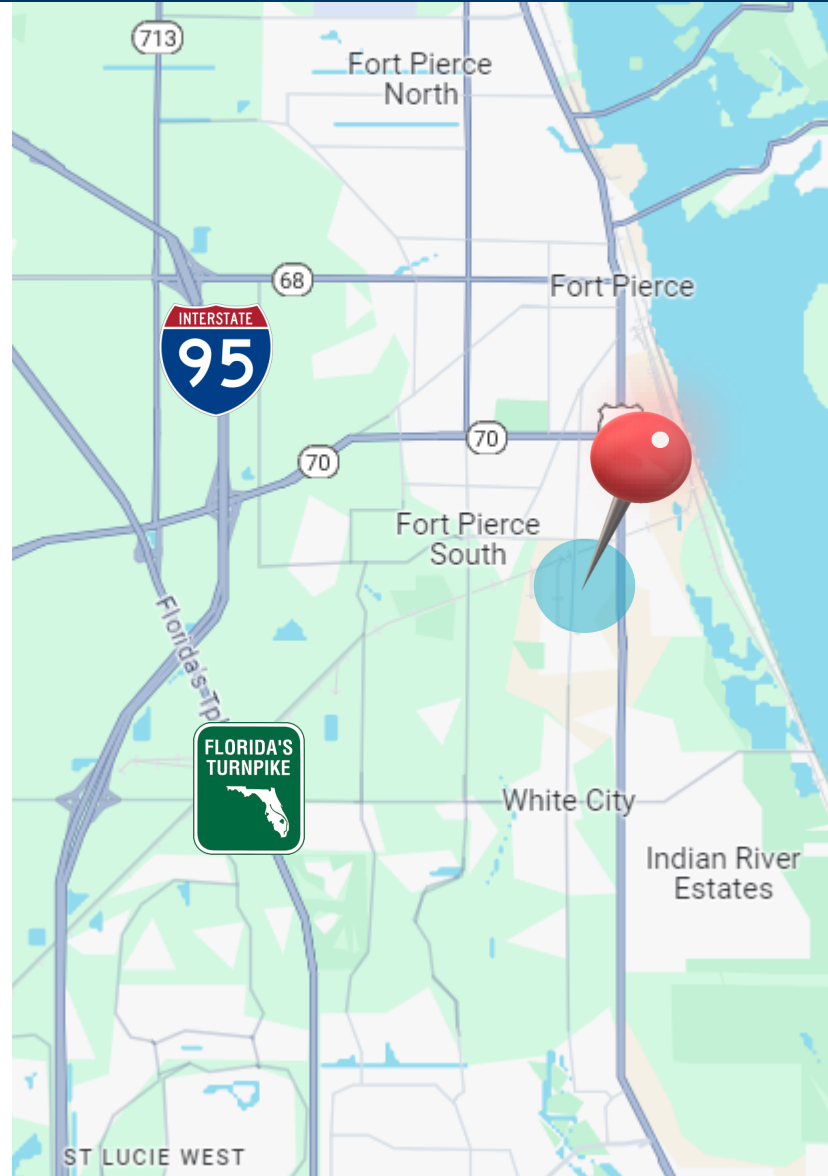
Parcel ID: 2427-601-0050-000-7

SALE PRICE: \$1,400,000

CONTACT ME

ADEMIL CASTRILLO
772-201-6212

Ademil@brayrealtyadvisors.com



LAND FOR SALE

3307 S US 1, Ft Pierce, FL 34982



BRAY REALTY ADVISORS

ZONING

The parcel has dual zoning designations front 2.65 +/- acres are zoned GC (General Commercial) and the back 1.07 +/- acres are zoned RM11 which allows for up to 11 residential units per acre with future potential access through S 7th Street.

Great opportunity for owner use or developer to acquire a centrally located parcel of land in the growing market of Ft. Pierce with upcoming new residential, commercial and industrial developments.



CONTACT ME

ADEMIL CASTRILLO
772-201-6212

Ademil@brayrealtyadvisors.com

1.07 +/- Acres
RM11 Zoning

2.65 +/- Acres
General Commercial Zoning

