

LAND FOR SALE

Commercial Development Opportunity

NW Conley Drive, Port St. Lucie



BRAY COMMERCIAL
SERVICES

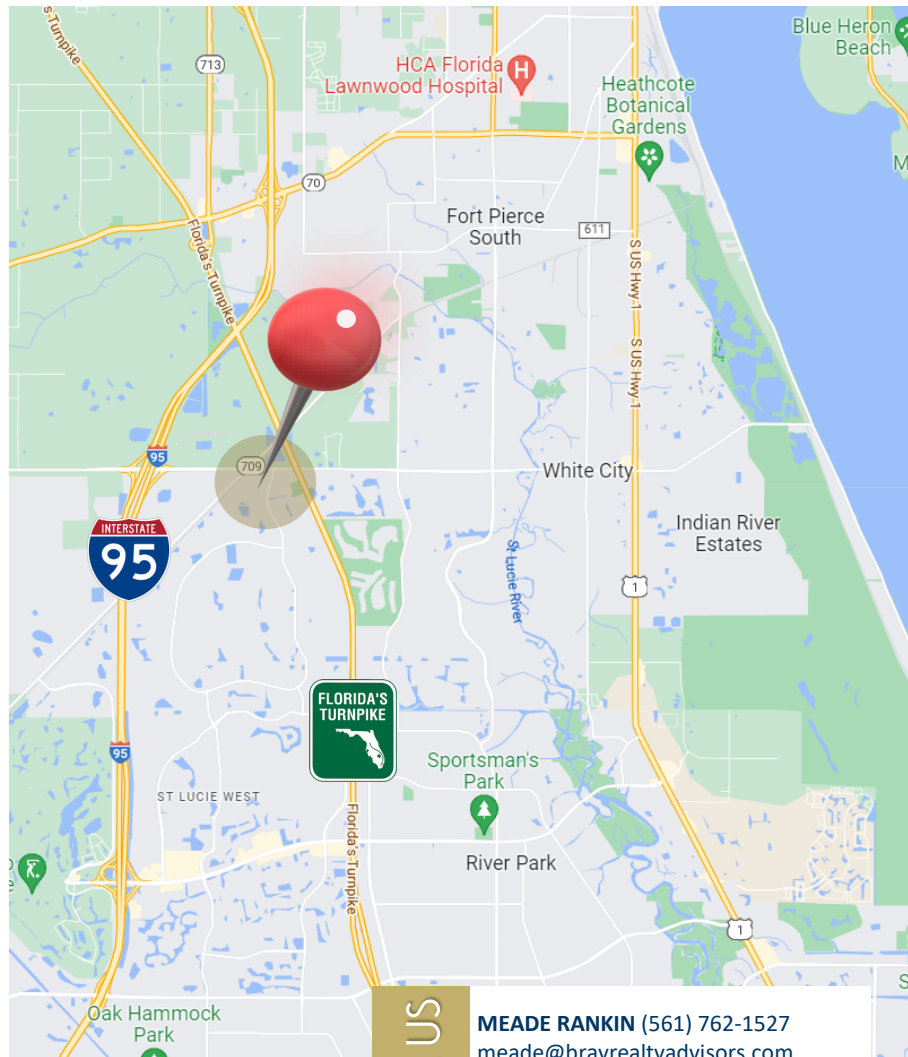
3.72 +/- ACRES | Ideal for retail center, restaurant, mixed use storefront retail & office.

DESCRIPTION: Exceptional commercial development opportunity at corner of NW East Torino Parkway and NW Conley Drive, less than half mile south of Midway Road. Prior site plan approval for 20,694 SF Retail Center. The Torino market in North-western Port St. Lucie is a high density populated residential area with a tremendous demand for restaurants and retail shopping. Site plan, survey and engineering report available upon request.

HIGHLIGHTS: Zoned commercial neighborhood which allows for numerous type users per St. Lucie County planning and zoning. Excellent location less than 1/2 mile south of Midway Road the major East-West corridor from I-95 into US 1, Fort Pierce, surrounded by heavy density residential as well as close proximity to the new 1.1M SF Amazon distribution center.

DETAILS:

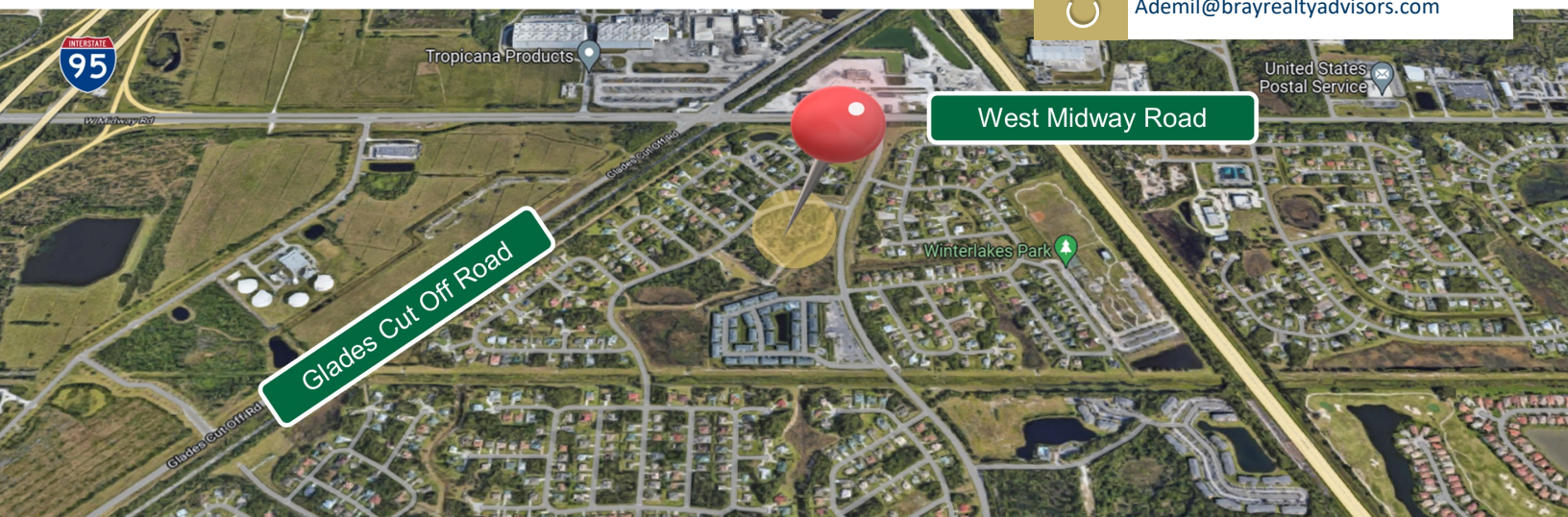
Parcel ID	3420-735-0005-000-1
Lot Size	3.72 +/- acres
Frontage	636 +/- feet
Zoning	Commercial Neighborhood
Future Zoning	Commercial Neighborhood



CALL US

MEADE RANKIN (561) 762-1527
meade@brayrealtyadvisors.com

ADEMIL CASTRILLO (772) 201-6212
Ademil@brayrealtyadvisors.com



NW Conley Drive, Port St. Lucie



www.BrayRealtyAdvisors.com